



Accessible Housing Mitigates Climate Change: **Transportation**

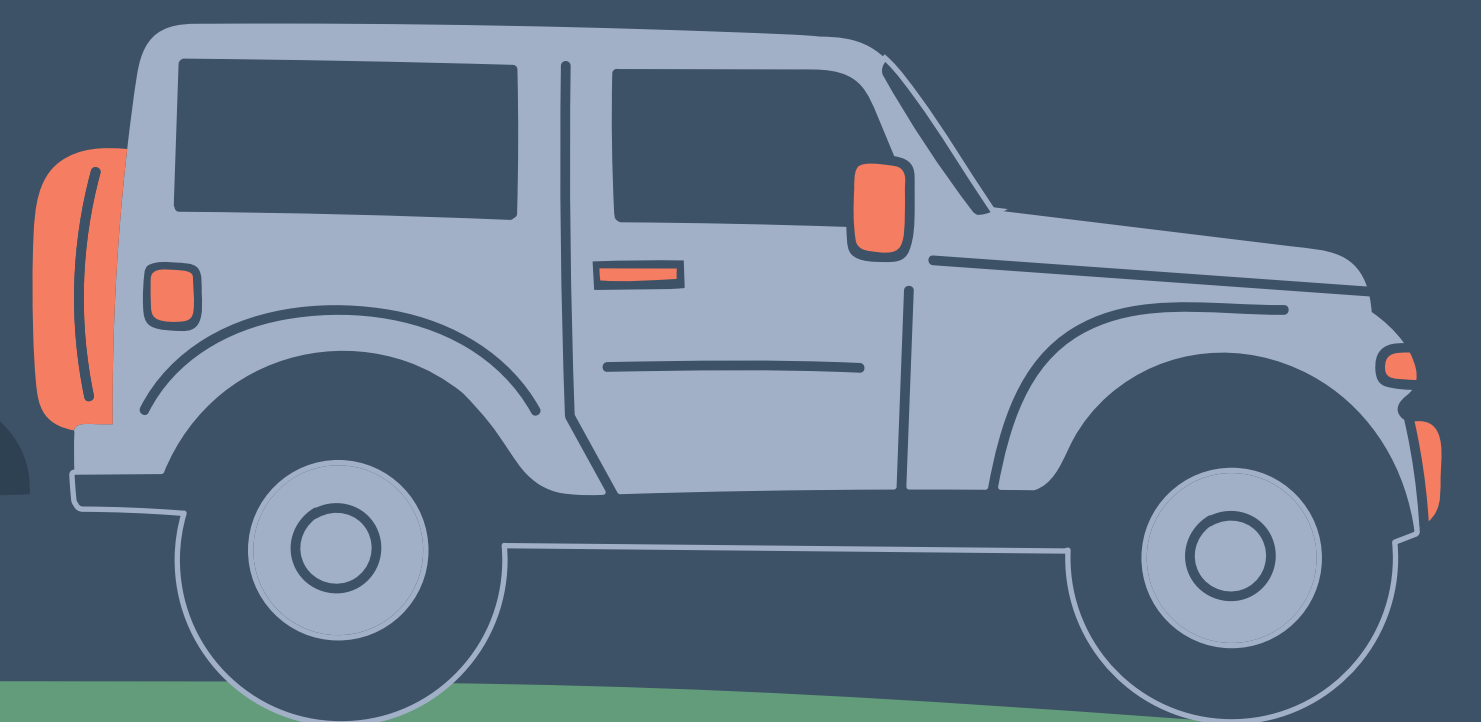
We need more accessible housing options nearer to jobs, schools, grocery stores, parks, transit stations, and other places to reduce transportation pollution. Here's why:

Pollution from transportation is the #1 source of climate pollution in Colorado.

Pollution negatively impacts health. Asthma, cancer, cardio and respiratory disease, and even low birth weights are greatest near major highways. However, many people have no option other than to live further out and drive to get to work.

A healthier environment, including safe and affordable housing, means healthier people.

The rising cost of housing and ongoing practices like exclusionary zoning are preventing development close to job centers and other desirable amenities, pushing people to live farther away from the places they need to go. The resulting sprawl creates more traffic, increases households' climate footprint, encroaches on wildlife habitat and open space, stretches water resources, and pushes development to wildfire-prone areas.



Accessible, equitable housing options nearer to jobs, schools, grocery stores, parks, transit stations, and other places will reduce transportation pollution, protect the environment, and get people into homes.